

- PENDANTS: one
- MOUNTING: mini innie canopy (mud-in) 35mm (1.4') in diameter (exposed), 88mm (3.5') in diameter (overall) x 35mm (1.4')
- LAMPING: 1.5w LED or 10w xenon
- COAX: adjustable. 3000mm (10') standard / up to 30500mm (100') maximum
- MATERIALS: blown glass, copper mesh, braided metal coaxial cable, electrical components, white polyurethane canopy
- WEIGHT: approximately 2kg (4.5lb)
- TRANSFORMERS: remote mounted (fixture does not hook directly to a junction box). Transformers included

DESCRIPTION

The 'mi' designation in this 84 variant refers to the mini innie canopy. The mini innie canopy is 35mm (1.4') in diameter (exposed), 88mm (3.5') in diameter overall, and 35mm (1.4') deep, which is meant to be mudded into drywall. The pendant drop lengths on this light fixture are adjustable up to the specified maximum. Note: not adjustable after drywall in finished.

A white glass bubble is captured inside a fine copper mesh basket and then plunged into hot clear glass. Air is blown into the matrix to gently push the white glass through the mesh, creating a delicate pillowed form that is suspended inside the thick outer layer of clear glass. Sometimes the copper mesh basket folds and crinkles, adding specificity to each piece.

NOTES

- + Purchase replacement lamps online at www.bocci.ca/lamps
- + Unless otherwise noted when ordering, all fixtures will be outfitted to be xenon compatible
- + Unless otherwise specified, a single class 2 transformer will be sent for every 5 xenon fixtures or every 12 LED fixtures
- + Requires transformers to be remote mounted

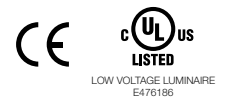
US Patent Pending
EU Patent # 003611144-0001 to 0004

Made in Vancouver, Canada

Vancouver
sales@bocci.ca
www.bocci.ca

Berlin
europe@bocci.ca
www.bocci.ca

approx 2kg (4.5lb)



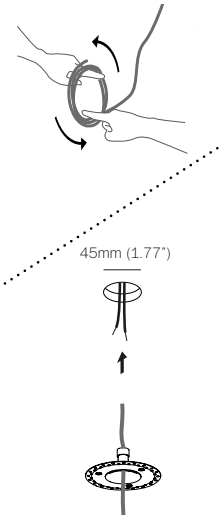
MINI INNIE CANOPY

84.1mi

Design by Omer Arbel
PRODUCT SPECIFICATION

© 2018, Bocci Design and Manufacturing Inc. All rights reserved. Any inquiries should be directed to: info@bocci.ca

BOCCI



1

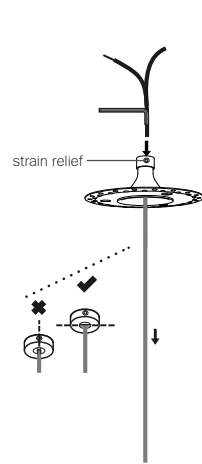
Very carefully uncoil the braided coaxial cable in a spool like manner. Insert your index fingers into opposite sides of the roll then rotate your fingers around each other to unroll the coaxial cable.

Use patience: allow the cable to uncoil completely to avoid kinks.

Thread the coaxial cable through the canopy.

Drill a 45mm (1.7") diameter hole in ceiling material. Pull low voltage house wire through the hole.

Note: This low voltage wire will run to a remote mounted transformer.



2

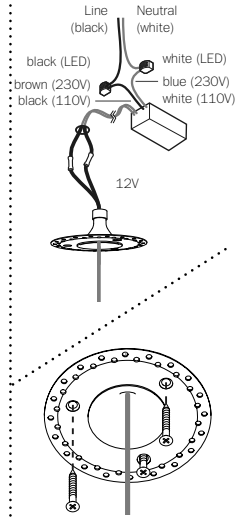
Determine the overall drop for the pendant fixture. Use the 2mm Allen key to loosen the setscrew in the canopy and gently feed the cable through until you have reached your desired drop length.

Use Allen key to tighten the setscrew to hold the strain relief and secure the coaxial cable at its new length. Perform a gentle tug test to ensure it is secure.

DO NOT OVERTIGHTEN.

Note: The strain relief is a black plastic collar around the coaxial cable. There is a single slot opening on the side of the strain relief component. It is essential that this opening is oriented at 90 degrees to set screw chamber. There can be no contact between the set screw and the cable.

RISK OF ELECTRIC SHORT!



3

Xenon (110V) or LED: connect the black wire to black and white wire to white wire.

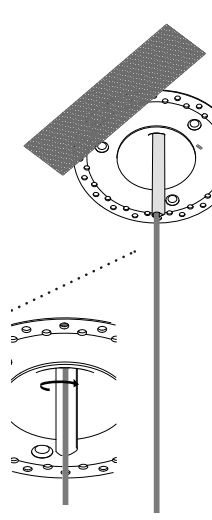
Xenon (230V): connect black wire to brown wire and white wire to blue wire.

Connect the house wires to the coaxial cable using #16 butt splices (stagger the splices). Use raw butt splices and heat shrink to simplify the installation.

For multiple pendant installations, ensure that the braided outer wires are all connected to one 12V output wire and all inner insulated wires are connected to the other or a short will occur.

Note: Insulated core is positive and braided exterior is negative.

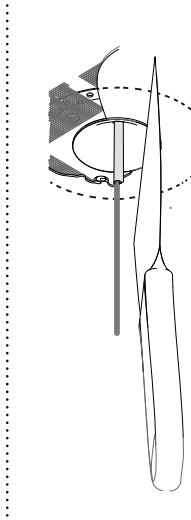
Affix mini innie canopy to ceiling surface with fasteners provided.



4

Tape the mounting plate edges with fiber mesh drywall tape.

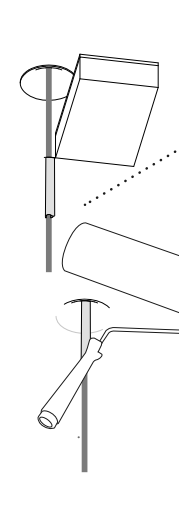
Note: mask the coaxial cable off with painters tape to help with cleanup.



5

Use a drywall filler compound to "mud over" the assembly. Use the raised edge to mud up to to establish a sharp edge and to avoid getting mud in the indentation

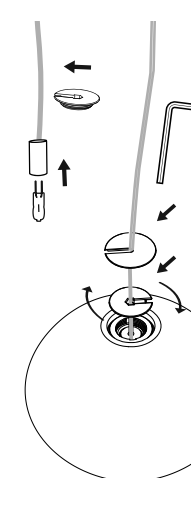
Feather from the center of the mounting plate outwards using a large drywall trowel.



6

Using a foam sanding block, sand entire area until the rim and the edge of the operative component are exposed. For long term performance, it is essential that mud is sanded right down to the plastic rim.

Paint over entire assembly.



7

Bocci 1.5w LED or 10w xenon lamps are included. Plug the lamp into lamp socket.

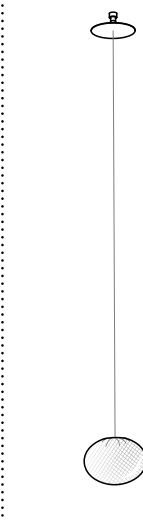
Do not touch the lamp with your bare hands.

Remove the centre cap from 84 pendant, sliding it onto the coaxial cable. Gently insert the lamp into the pendant and then tighten the cap connection with the Allen key provided.

DO NOT OVERTIGHTEN.

Slide cover cap onto the coaxial cable and place into the inset portion of the pendant hardware.

Note: when using a dimmer use only low voltage electronic dimmer



8

Remove masking tape and clean fingerprints from glass surfaces.

Turn fixture on.

For additional assistance, please contact Bocci:

Vancouver
sales@bocci.ca
www.bocci.ca

Berlin
europe@bocci.ca
www.bocci.ca

US Patent Pending
EU Patent # 003611144-0001 to 0004

Made in Vancouver, Canada



MINI INNIE CANOPY

84.1mi

Design by Omer Arbel
PRODUCT INSTALLATION INSTRUCTIONS

© 2018, Bocci Design and Manufacturing Inc. All rights reserved. Any inquiries should be directed to: info@bocci.ca

BOCCI